



In collaboration with



HIGH LEVEL DIALOGUE ON ASEAN ITALY ECONOMIC RELATIONS

Eighth Edition

November 6, 2024 - Philippines Dusit Thani Hotel, Manila

PRESENTATION BY KIMANG KHUN

Main Partner



Partner



With the Patronage of



Institutional Partner



With the support of



Technical Partners



Strategic Partner



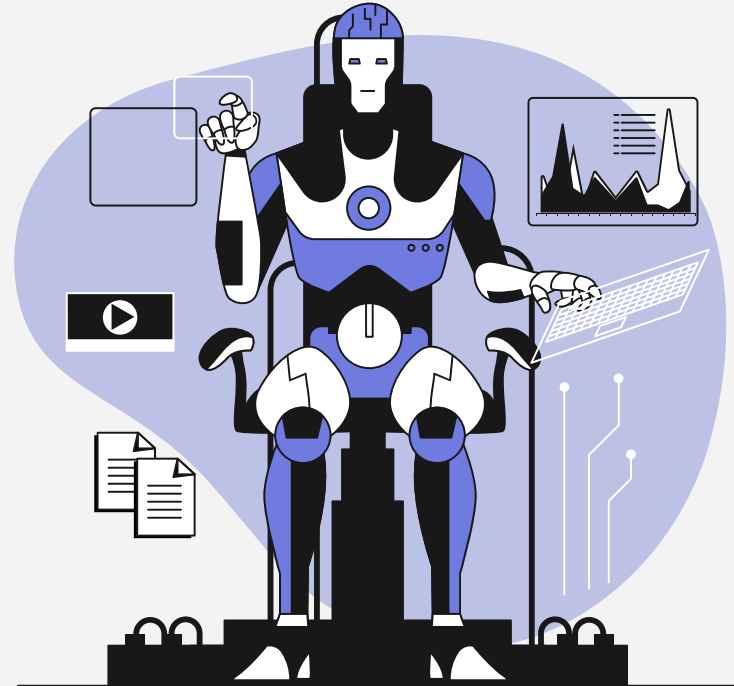
Event Partners



The Emergence of AI-powered Humanoids

Kimang KHUN

High-Level Dialogue on ASEAN-Italy
Economic Relations, Dusit Thani Hotel Manila,
November 2024





LLMs are just the beginning.

Integrating Large Language Models (LLMs) is the **trend** in the software market.





LLMs are just the beginning.

Integrating Large Language Models (LLMs) is the **trend** in the software market.

The Generative AI Market Map ^{vs}



A work in progress



AI FARM ROBOTICS



Source: Sequoia

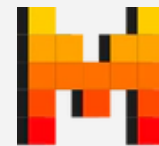
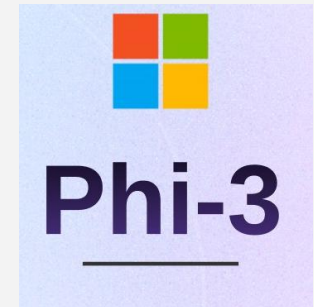
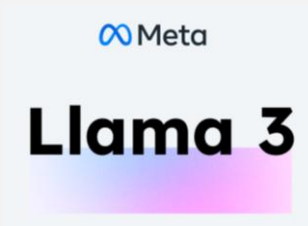




2023 - 2024 2024 - now

LLMs are just the beginning.

LLMs with enhanced capabilities and user-friendly are consistently being released.

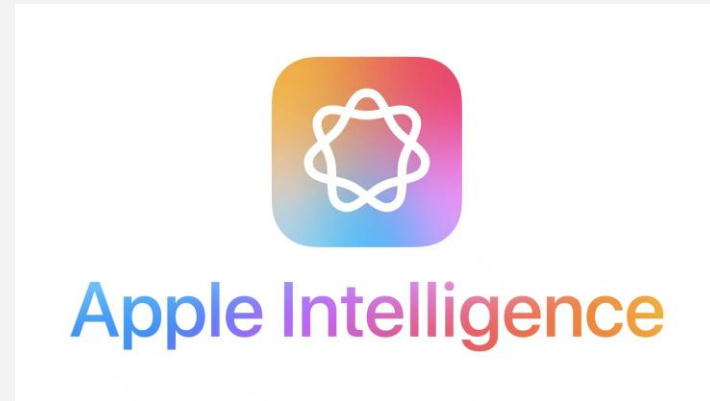


MISTRAL
AI_





The growth research into AI agents that can autonomously navigate and operate within digital environments.





Project Astra: Our vision for the future of AI assistants, Google I/O 2024

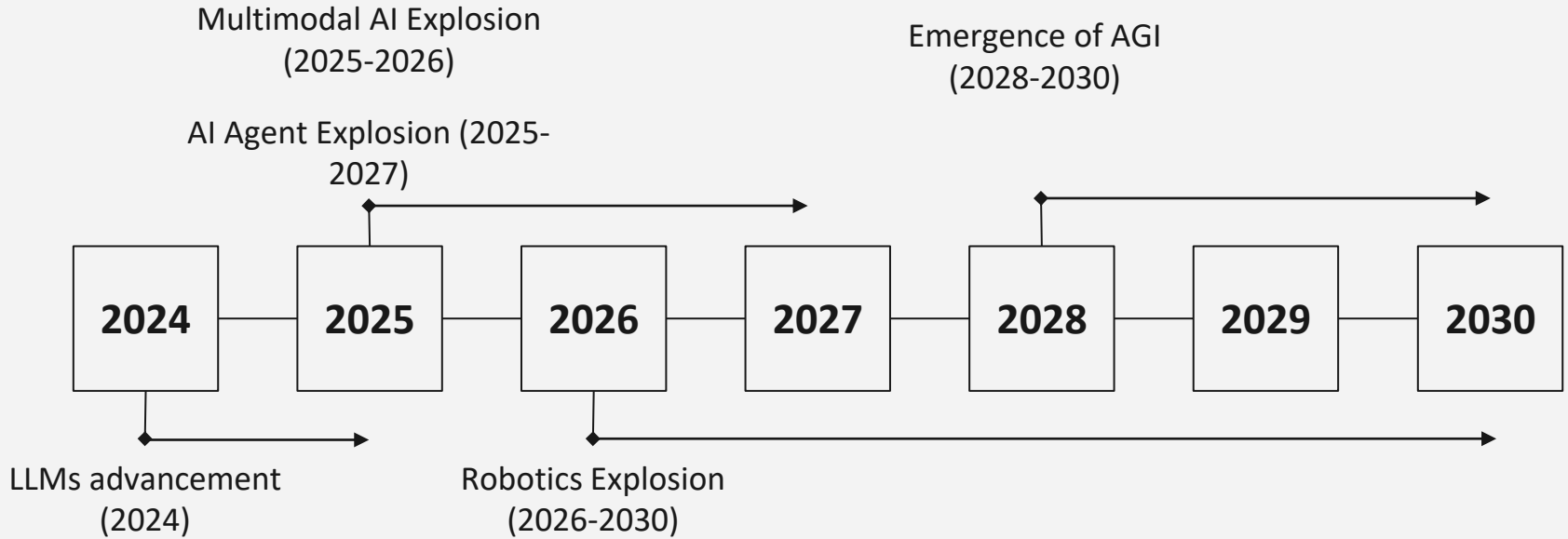


SPEECH-TO-SPEECH REAS

LLMs in Robots

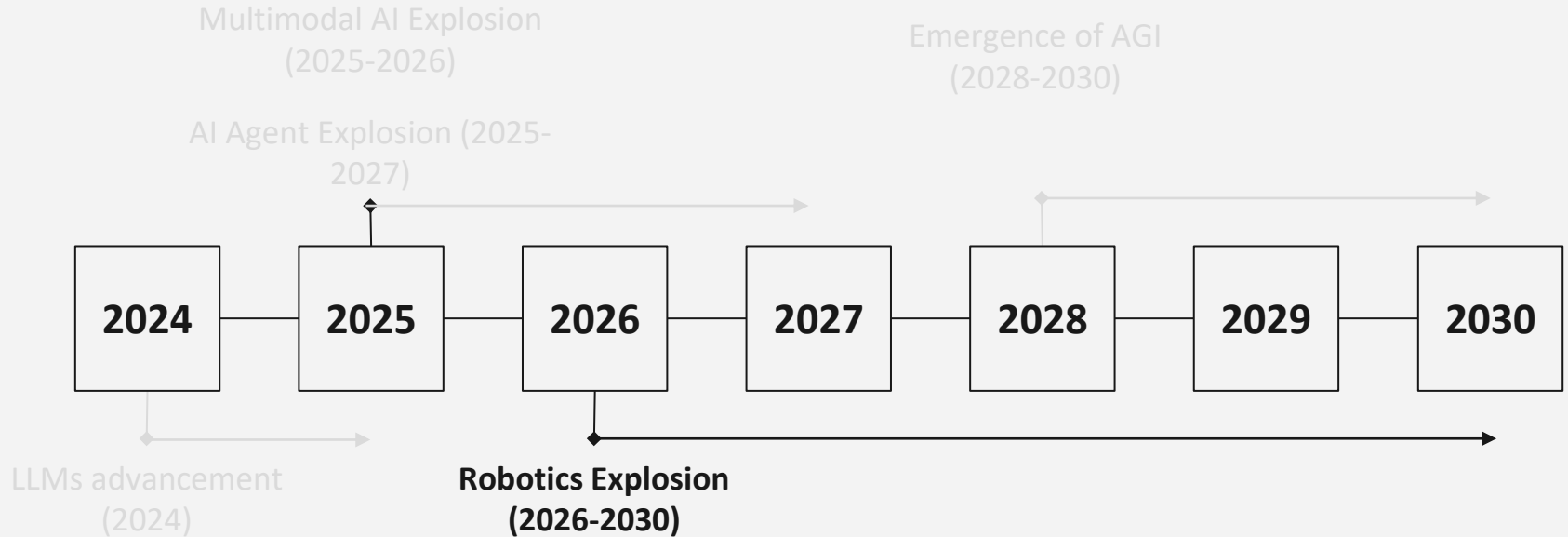
LLMs is a New Trend in Robotic Industry





Source: The Road to AGI, MAICON 2024





Source: The Road to AGI, MAICON 2024



| Tier | Industry | US Total Employment (mn) | # Adoptable (mn) | % Adoptable |
|--------------|--|--------------------------|------------------|-------------|
| 1 | Construction and Extraction | 6.2 | 4.4 | 70% |
| 1 | Production | 8.8 | 6.0 | 68% |
| 1 | Farming, Fishing, and Forestry | 0.4 | 0.3 | 67% |
| 1 | Building and Grounds Cleaning and Maintenance | 4.4 | 3.0 | 67% |
| 1 | Installation, Maintenance, and Repair | 6.0 | 4.0 | 66% |
| 1 | Healthcare Support | 7.1 | 4.6 | 66% |
| 1 | Food Preparation and Serving Related | 13.2 | 8.4 | 64% |
| 1 | Personal Care and Service | 3.0 | 1.9 | 61% |
| 2 | Protective Service | 3.5 | 2.0 | 58% |
| 2 | Transportation and Material Moving | 13.8 | 7.6 | 55% |
| 2 | Sales and Related | 13.4 | 5.8 | 43% |
| 2 | Healthcare Practitioners and Technical | 9.3 | 3.8 | 41% |
| 2 | Life, Physical, and Social Science | 1.4 | 0.5 | 39% |
| 2 | Architecture and Engineering | 2.5 | 0.8 | 33% |
| 3 | Educational Instruction and Libraries | 8.7 | 2.9 | 33% |
| 3 | Office and Administrative Support | 18.5 | 4.4 | 24% |
| 3 | Management | 10.5 | 1.3 | 12% |
| 3 | Arts, Design, Entertainment, Sports, and Media | 2.1 | 0.2 | 11% |
| 3 | Business and Financial Operations | 10.1 | 0.6 | 6% |
| 3 | Legal | 1.2 | 0.0 | 2% |
| 3 | Community and Social Service | 2.4 | 0.0 | 1% |
| N/A | Computer and Mathematical | 5.2 | 0.0 | 0% |
| Total | | 151.9 | 62.7 | 41% |

*Adoption begins
2028*

*Adoption begins
2036*

*Adoption begins
2040*

-
-
-
-

AI Farm is the 1st Robotic Company in Cambodia.



“Living code creator – robot makes robot”

OUR MANAGEMENT TEAM



Kim Khorn Long
Founder & Chairman
[in](#)

A serial entrepreneur founding and scaling multiple ventures across deep tech space. 5+ years as a consultant specializing in human rights, humanitarian law, foreign policy, and public policy and collaborated with various international organizations and worked in multiple countries across Asia, Europe, and North America.

Holds a BPhil. in Social Science and has pursued specialized training and degrees in Political Leadership, International Relations, Diplomacy, Human Rights, Humanitarian Law, and ASEAN Studies from RUPP, KASYP/KONRAD ACADEMY, IRI Cambodia, PUC, and NU/CACS.



Sreysar Heng
Group VP & CEO
[in](#)

10+ years across export-import & factory management and market entry strategies for streamlined operations & business growth with a passion in groundbreaking technology.



Mark Guiuo
Group CBO
[in](#)

20+ years of combined professional experience from various industries, focusing on strategic planning & execution, aligning business strategies with market opportunities, overseeing BD, and managing partnerships.



Samboth Noung
CFO
[in](#)

8+ years across investment banking skills & corporate advisory. A Chevening scholar with MSc. in Finance & Investment from Brunel University London, UK.



Thona Heng
CPO
[in](#)

8+ years of experience in HR and talent management and earned a Bachelor's degree in Business Administration from Pannasatra University of Cambodia.



Kimang Khun
CTO – Hardware
[in](#)

6+ years across AI, Reinforcement Learning & Data Science, and obtained his Ph.D. in Mathematics & Computer Science from University of Grenoble Alpes, France.



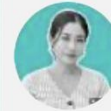
Maneth Park
CTO – Software
[in](#)

4+ years across JavaScript, React, Vue, TypeScript, NestJS, Python, Django, and PostgreSQL with a Bachelor's degree in Computer Software Engineering from Kirirom Institute of Technology, Cambodia.



Sovichea Tep
Chip R&D Director
[in](#)

With a Master's from ENSEIHT, France, expertise spans 8 years in Electronic System Design and IoT Integration. Additionally, contributed 6 years as an Electronic Eng. instructor at ITC.

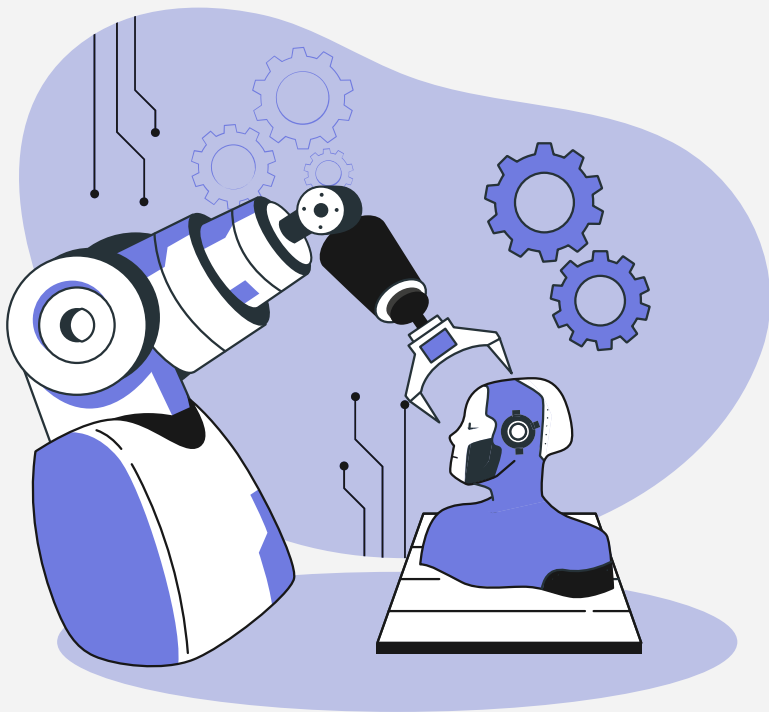


Maly Chan
CAO
[in](#)

With 15+ years of experience in accounting, Maly has a proven track record of leading financial operations and ensuring regulatory compliances. She obtained her Master's degree in Finance from NUM, Cambodia.



AI FARM ROBOTICS



We have
at least 3
years.



Thanks!

Do you have any questions?

khun.kimang@aifarm.dev

www.aifarm.dev

Please keep this slide for attribution



CREDITS: This presentation template was created by **Slidesgo**, and includes icons by **Flaticon**, and infographics & images by **Freepik**



