



HEADWAY^o 2023

A new roadmap in Mental Health

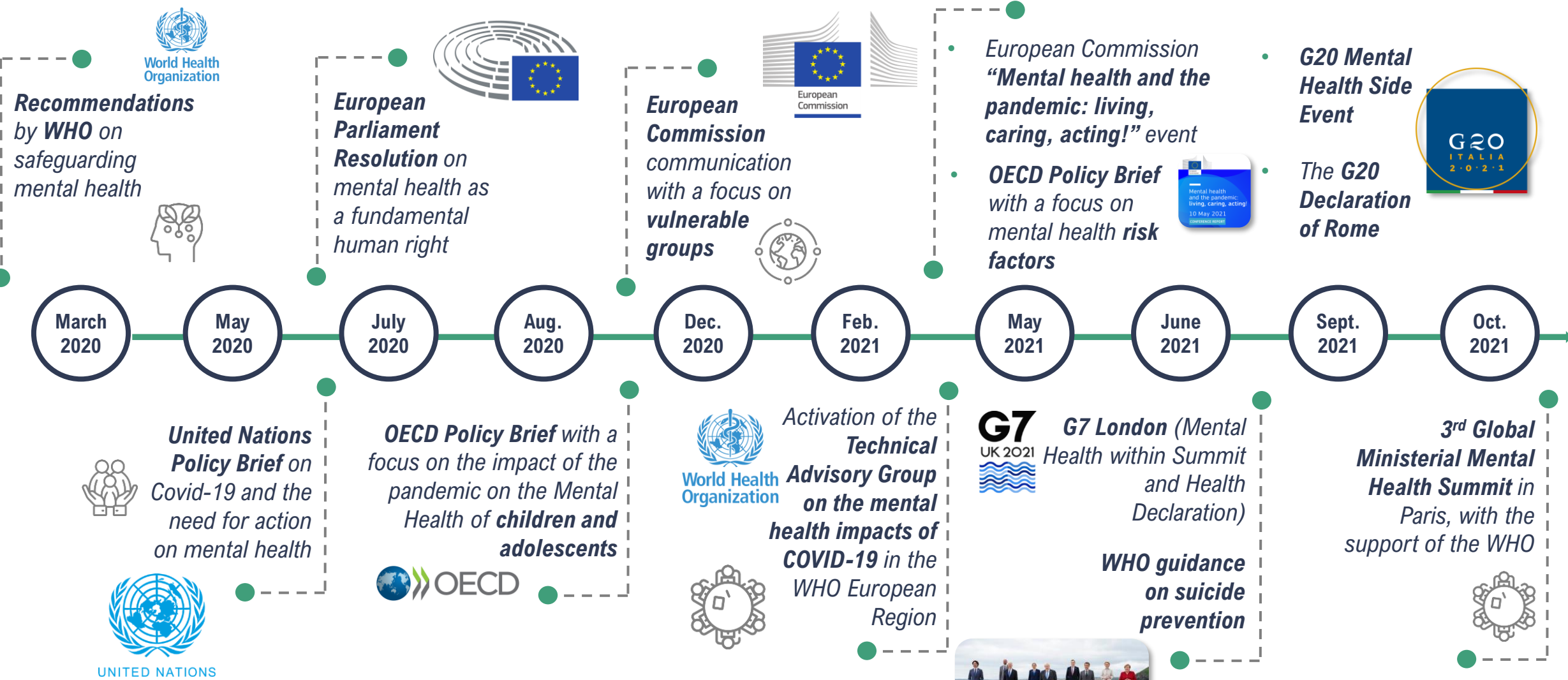
«Headway 2023 – Mental Health Index»

Daniela Bianco

Partner and Head of Healthcare Area, The European House – Ambrosetti

The following presentation contains data from the Report “Headway 2023 – Mental Health Index”, which arises from the initiative “Headway 2023”, realized by The European House – Ambrosetti in collaboration with Angelini Pharma.

Relevant Actions



Mental Health in the G20 under the Italian Presidency

- The 2021 G20, under the Italian Presidency, focused on **3 broad, interconnected pillars** of action:
 - People
 - Planet
 - Prosperity
- Among G20 objectives:
 - Advocate for **equitable**, worldwide access to diagnostics, therapeutics and vaccines – while building up resilience to future health-related shocks
 - Tackle the effects of the COVID-19 pandemic that has had **significant impacts on mental health and substance use and has underscored gaps in our mental health systems**
 - Integrate **mental health into broader health systems** and promote **equitable access to mental health services and psychosocial supports**
- During the G20 Health Meeting 2021, hosted by Italy, **for the first time a side event on Mental Health** was organized



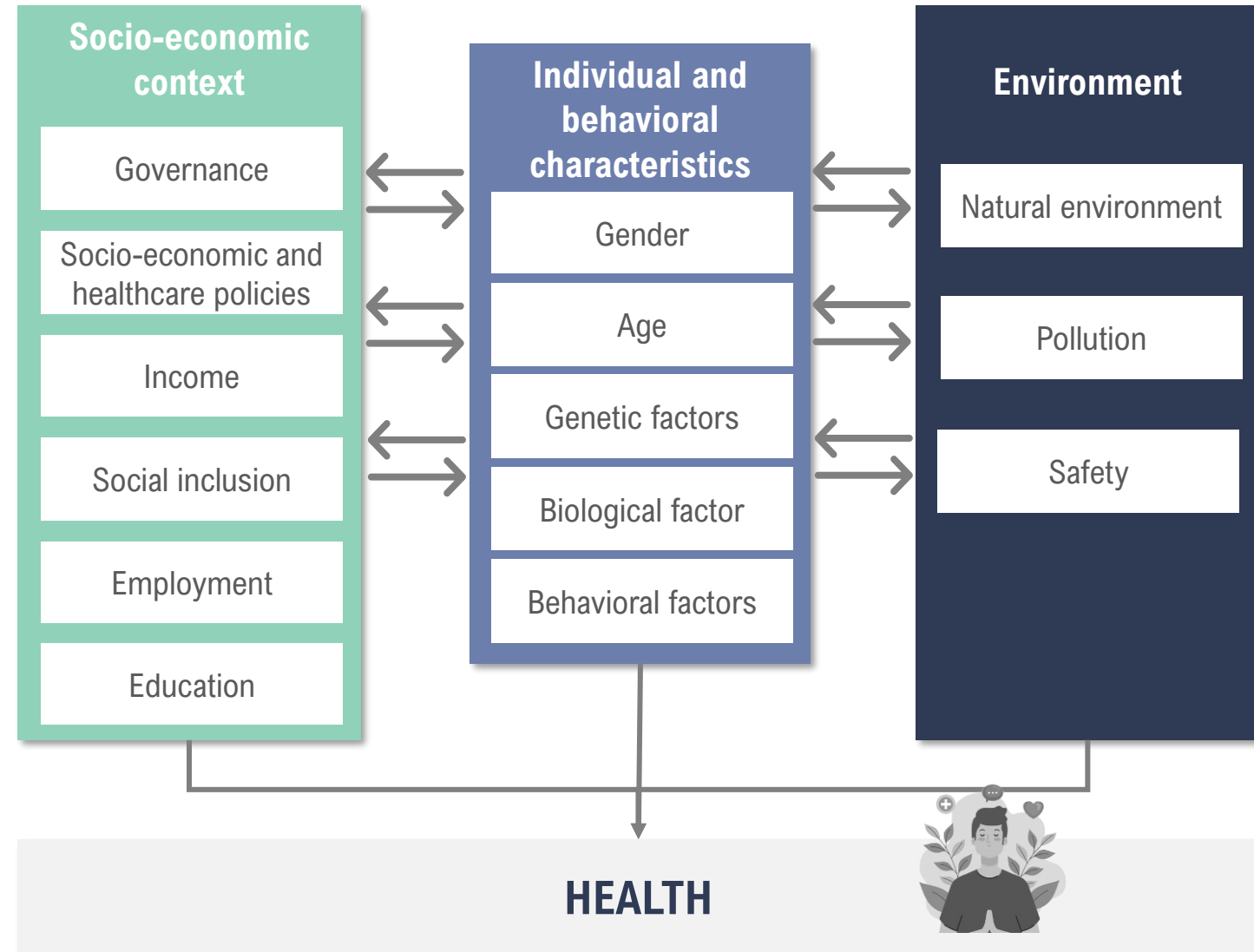
15. We also acknowledge that the COVID-19 pandemic has had significant impacts on mental health and substance use, and has underscored gaps in our mental health systems. A dedicated effort is needed to increase the capacity of and improve access to mental health services, in particular in times of health emergencies and crises and raise the access to and quality of care. In line with the WHO Comprehensive Mental Health Action Plan 2013-2030, recently endorsed at the 74th World Health Assembly, we will seek to integrate mental health into our broader health systems and promote equitable access to mental health services and psychosocial supports as part of pandemic response and economic recovery efforts. We would like to thank the Italian Presidency for the Mental Health Side Event, which offered a unique and timely opportunity to share and discuss the lessons learnt during the pandemic, and take note the Policy Paper and the key recommendations for the G20 countries to strengthen mental health as a crucial element of the COVID-19 response and recovery. We also welcome the upcoming 3rd Global Ministerial Mental Health Summit, organized in Paris on 5 and 6 October 2021, with the support of the WHO.



Mental health and health determinants

- The **determinants of health** include:
 - **individual and behavioral characteristics**
 - **Socio-economic context**
 - **Environmental context**

- In this scenario, **Work, School and Society** are **3 fundamental areas in mental health** and **have a significant impact on the latter** (management of people with mental and behavioral disorders and promotion of mental health well-being)



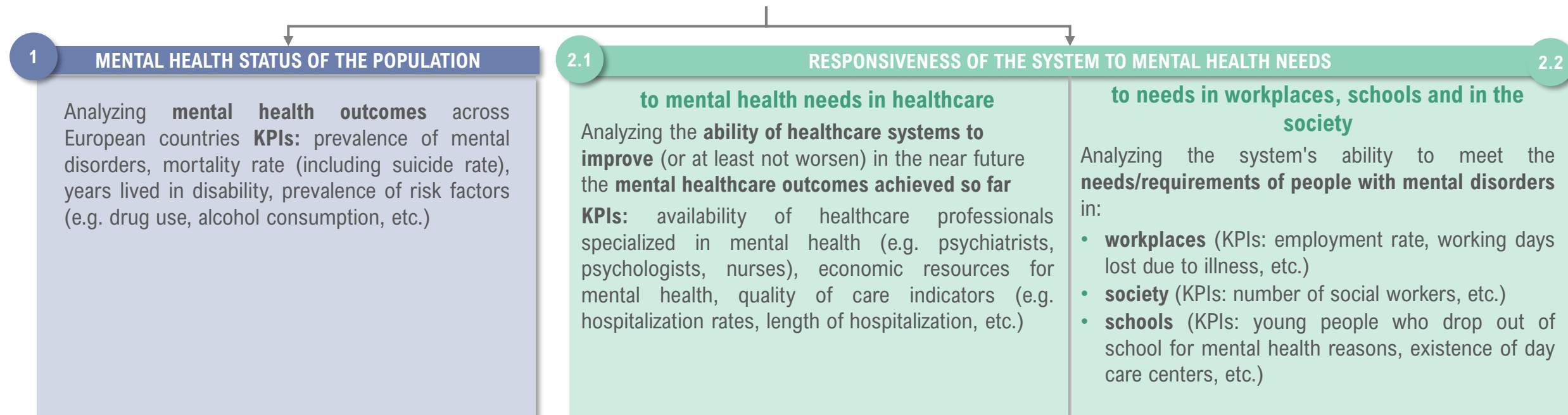
Introduction to «Headway 2023 – Mental Health Index»

Monitoring the responsiveness of a Country, assessing its trend over time and comparing it to other systems, allows for a **dynamic and more complete picture of the effects of health, social, employment and educational policy interventions** on the mental health status of the population



The "Headway 2023 - Mental Health Index" is designed to provide a **multidimensional picture on mental health** across European countries (EU-27 + UK). It is a framework **aimed at measuring** a limited number of indicators* representing key aspects of mental health and selected based on the comparability and availability of data from the EU-27 + UK countries.

The "Headway 2023 - Mental Health Index" consists of **3 sub-indices**



(*) **The realization of the “Headway 2020 - Mental Health Index” involves the use of the following databases:** World Bank, UN, OMS, OECD, Eurostat, Institute for Health Metrics and Evaluation (in particular Global Burden of Disease), as well as databases of Statistical Institutes and institutional sites of individual Member States (e.g. Ministries of Health sites), as well as secondary sources of scientific literature (e.g. papers, articles, reports, etc.).

“Headway 2023 - Mental Health Index”: an overview



In most of the cases **Eastern European Countries** have a low responsiveness of the Systems to needs in healthcare, workplaces, schools and society

- Across Europe, structural differences exist and create limitations in terms of data comparability between **databases and health-and social care systems**
- **Lack of available and reliable data** on the Mental Health Status of the population might induce some biases
- **Mis- and under-reporting** can be identified as an area of improvement in many European Countries

“Headway 2023 – Mental Health Index” matrix (score min=1; max=10)*, 2021

