

Brussels, September 28<sup>th</sup>, 2022

# Headway

A new roadmap in Mental Health

The logo graphic consists of two stylized human profiles facing each other, forming a circular shape. The profiles are filled with a gradient of colors, transitioning from blue on the left to green on the right.

## “Headway – Mental Health Index 2.0”

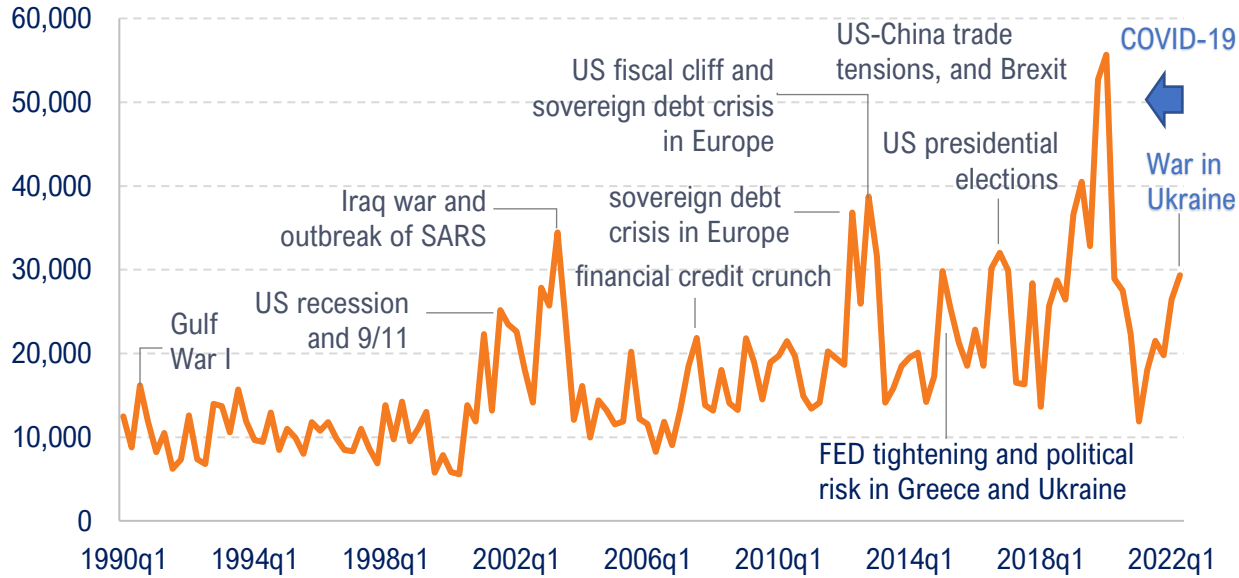
**Daniela Bianco** - Partner and Head of Healthcare Area,  
The European House – Ambrosetti

*The following presentation contains data from the Report “Headway – Mental Health Index 2.0”, which arises from the initiative “Headway”, realized by **The European House – Ambrosetti** in collaboration with **Angelini Pharma**.*

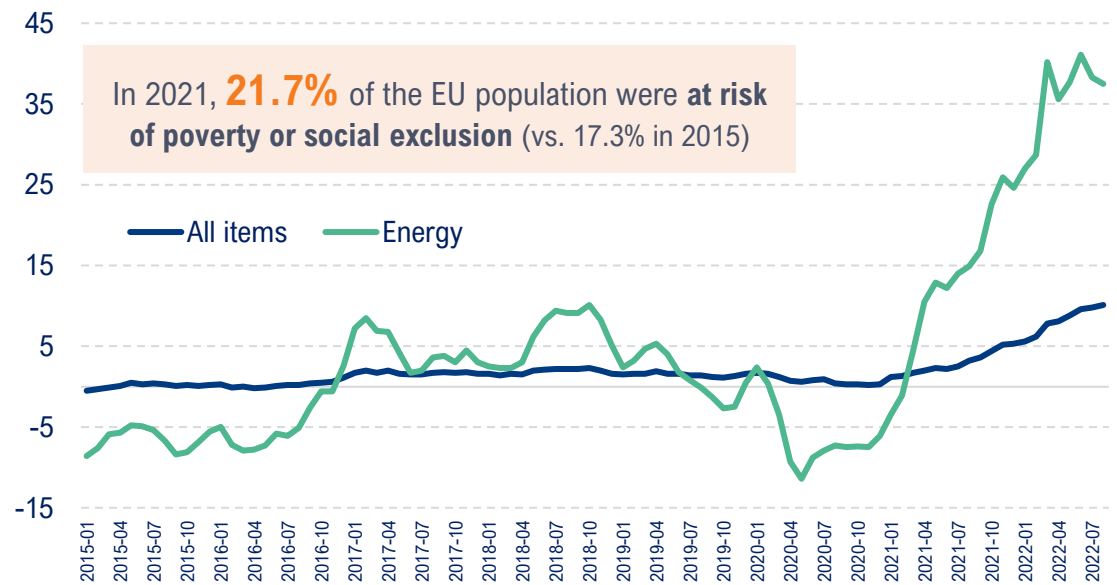
© 2022 Headway: A new roadmap in Mental Health. All rights reserved.

# During 2022, the European population has witnessed the concurrence of significantly impacting crisis factors

World Uncertainty Index (GDP weighted average), 1990q1-2022q1



EU annual inflation (% , all items and energy sector), 2015-2022



## Russia's war in Ukraine, key numbers

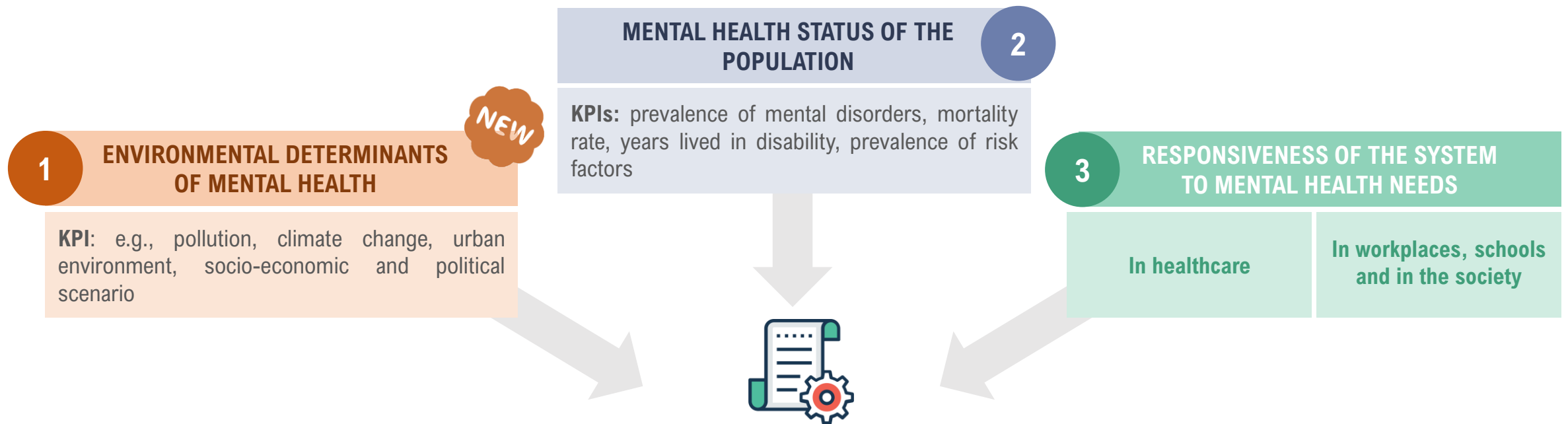
- 13 million** Ukrainians displaced - Europe's largest refugee crisis since World War II (Source: UNHCR)
- 5,600** civilians killed in Ukraine (Source: UN)
- 1 out of 2** Ukrainian children displaced after 1 month of war (Source: Unicef)
- 45%** forecasted contraction of Ukraine's economy in 2022 (Source: World Bank)

## Climate change, key numbers

- 4 times** the hectares burned across the EU in 2022 vs. the previous record of 2006 (Source: Copernicus)
- 3,000** excess deaths in July in UK due to record heat (Source: Eurostat, Destatis)
- +1.99 °C** increase in European land temperatures between 2012 and 2021 (Source: EEA)
- €487 billion** of economic losses in the last 40 years in EU due to extreme events (Source: EEA)

# Structure of the "Headway - Mental Health Index 2.0"

The "Headway Mental Health Index 2.0" is designed to provide a **multidimensional picture on mental health** across European Countries (EU-27 + UK). It is a framework **aimed at measuring** a selected number of indicators\* representing key aspects of Mental Health and considering the comparability and availability of data. The "Headway - Mental Health Index 2.0" consists of **3 main pillars**:



**“Headway - Mental Health Index 2.0”**  
The Index includes **55 Key Performance Indicators (KPIs)**

# A brief overview on the results

- Within Europe, a **variety of environmental health, social and economic systems** co-exists. That is why, during the analysis, standardizations have been conducted and estimates have been used when data were missing.
- Summary statistics are provided for each **Country in the 3 dimensions of the Mental Health Index.**
- The results achieved by **Northern European Countries** are higher than the ones obtained by **Eastern European Countries.**

“Headway – Mental Health Index” matrix (score min=1; max=10), 2022

