

Milan, July 21<sup>st</sup>, 2022



## DIGITAL EVENT

# Headway – A new roadmap in Brain Health: *Focus Epilepsy*

## Introduction

**Daniela Bianco** – Partner and Head of Healthcare Area, The European House – Ambrosetti

# Aims of the “Headway – A new roadmap in Brain Health: Focus Epilepsy” initiative



Increase **knowledge and awareness** of the critical issues/specificities related to Epilepsy among policy makers, media and the general public, outlining the **current scenario in Europe** and **elaborate reflections on the impacts of Epilepsy** with a particular focus on health and quality of life



Create **benchmarks** to compare **policies and action plans** developed and **implemented** across Europe



Stimulate **debate among relevant stakeholders** (including policy makers, institutions, patient and caregiver associations, clinicians, health economists, etc.)



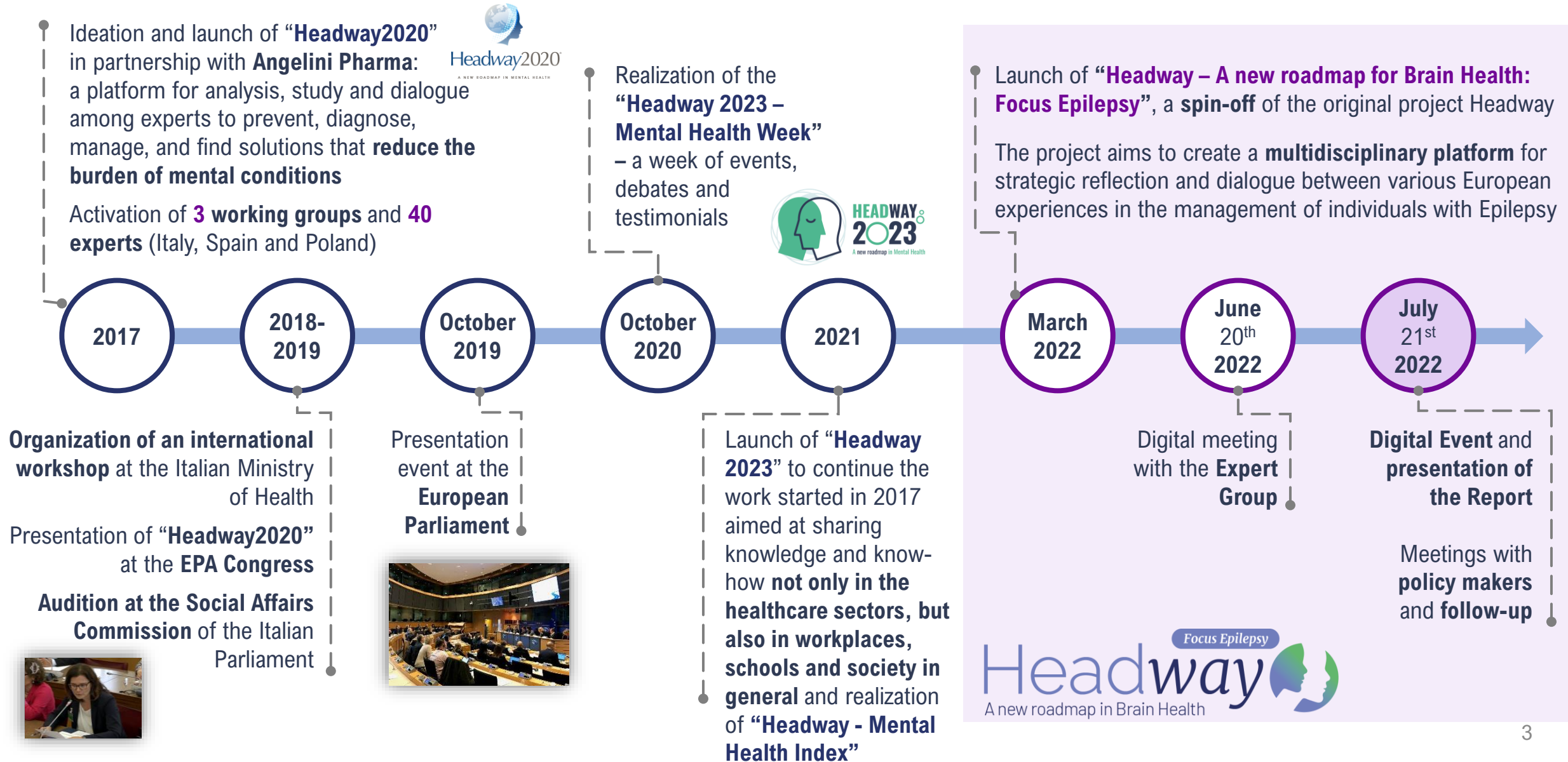
Communicate and disseminate the **results of the initiative and its proposals for action** and **raise awareness** at European level



Identify **priority areas of intervention** to promote **good health for people with Epilepsy**

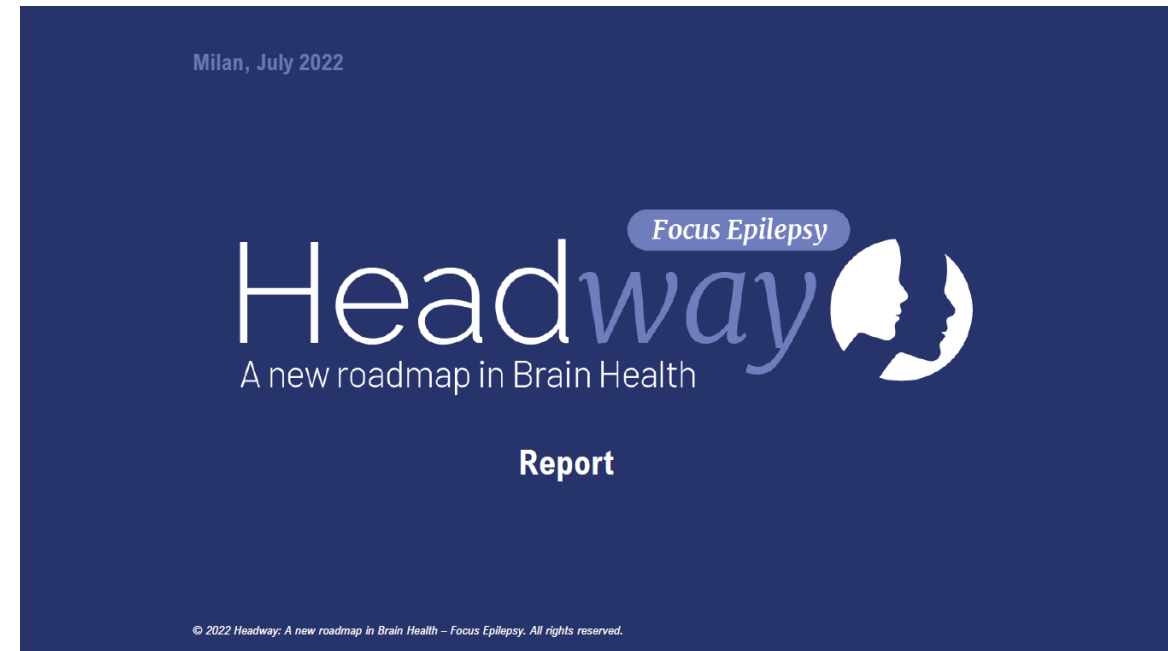
To achieve these goals, the following activities have been carried out: **analysis of the reference scenario**; identification of **case studies** and European countries **policy benchmarks**; **impact analysis**; definition of **proposals** and **lines of action**.

# Milestones of the initiative



# The contents of the report

- The **epidemiological context** of Epilepsy in Europe
- The **socio-economic impact** of Epilepsy in Europe and the **impacts of the COVID-19 pandemic**
- The **management of Epilepsy** and the **main critical points of the patient journey**
- **The management of Epilepsy in Europe**
  - At healthcare level
  - In school settings
  - In workplaces
  - In society in general
- **Research** on Epilepsy in Europe
- **Priority areas of intervention**



To download the **report** please visit:

<https://eventi.ambrosetti.eu/headway-epilepsy/>