

WPP | The European House - Ambrosetti

Valorizzare il capitale umano per lo sviluppo del Paese: strategie di crescita e cambiamento.

22 Novembre 2024

Presentazione di

ALESSANDRO ROSINA



Il contesto demografico di riferimento e il futuro che ci aspetta

Alessandro Rosina

Ordinario Demografia e Statistica sociale

Direttore Centro di ricerca LSA

Università Cattolica di Milano



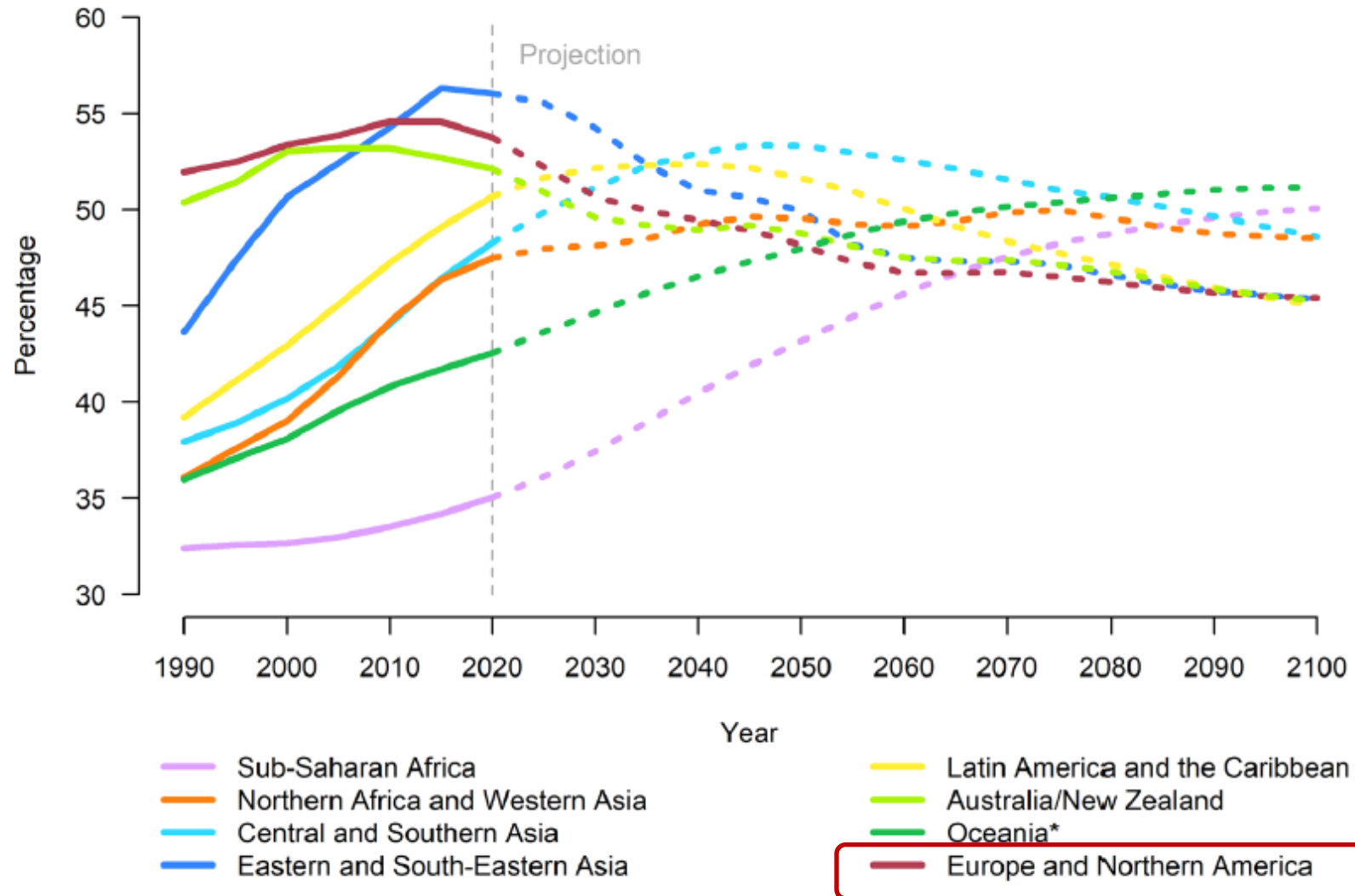
UNIVERSITÀ
CATTOLICA
del Sacro Cuore

LSA

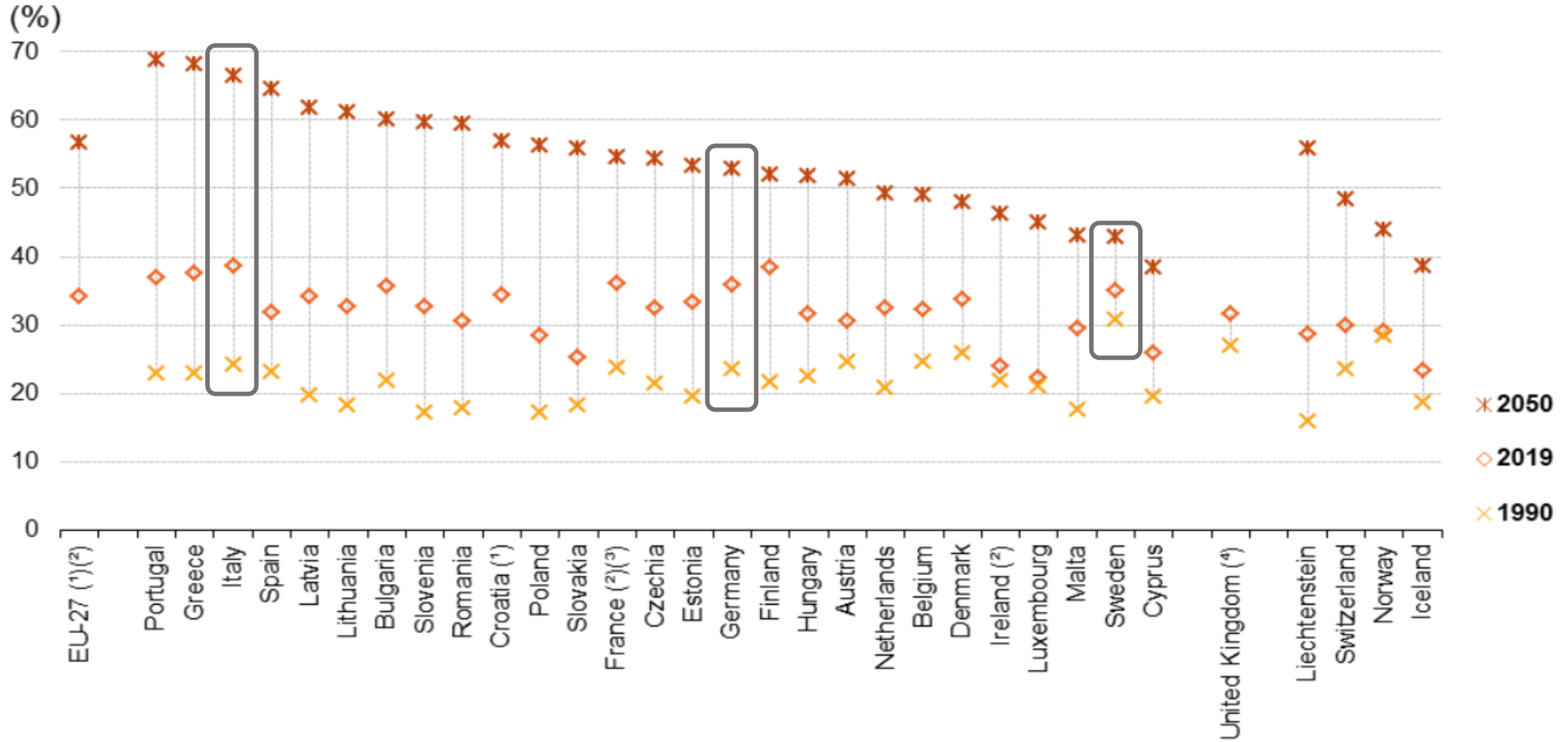
Laboratorio di Statistica applicata
alle decisioni economico-aziendali

L'ENTRATA IN UNA NUOVA FASE

Working age population (aged between 20 and 64 years, WPP NU)



Old-age dependency ratio, 1990, 2019 and 2050



Note: the old-age dependency ratio is calculated as the number of people aged ≥65 years divided by the number of people aged 20-64 years, expressed as a percentage. 2050: population according to the 2019 projections, baseline variant (EUROPOP2019).

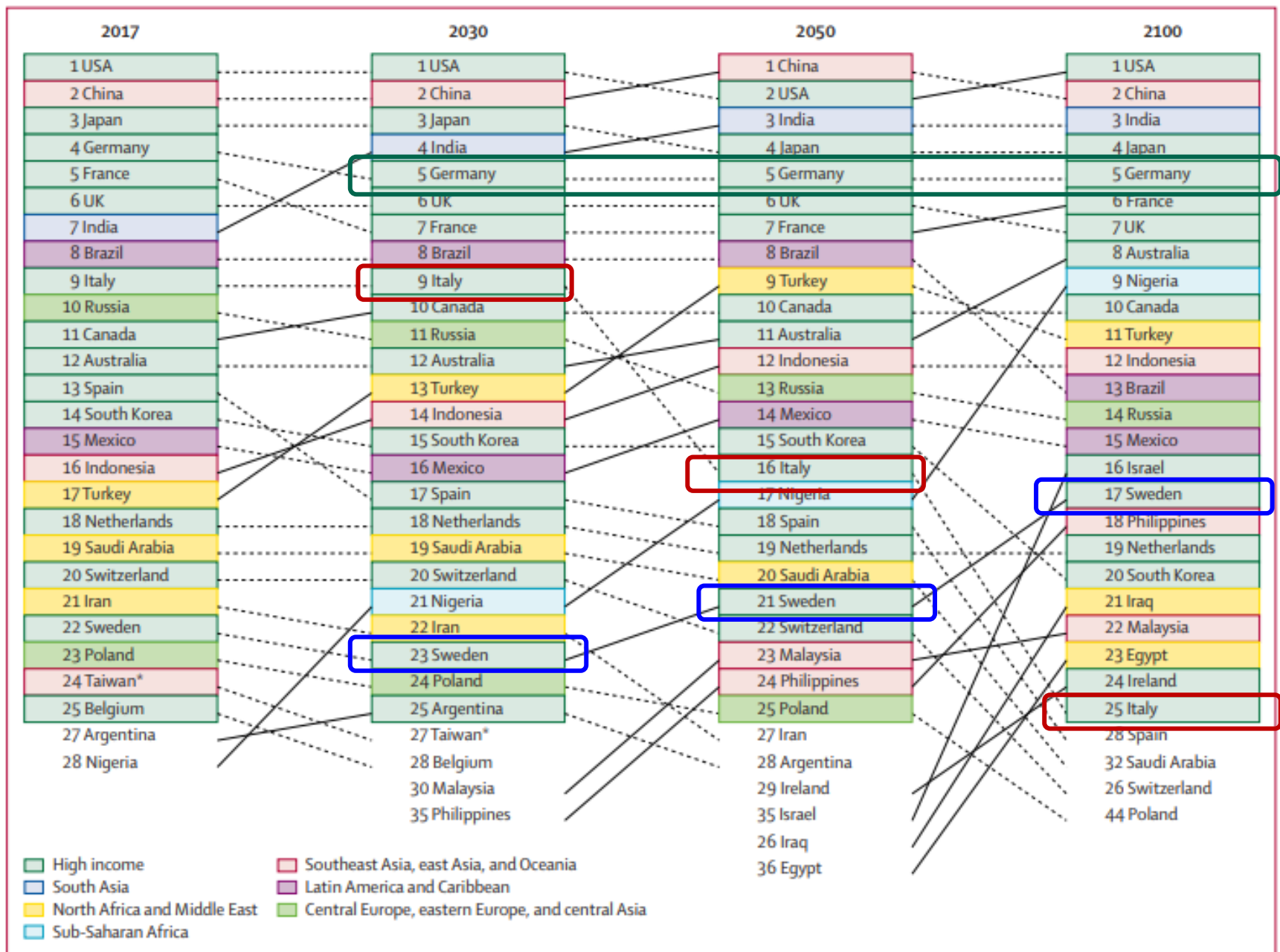
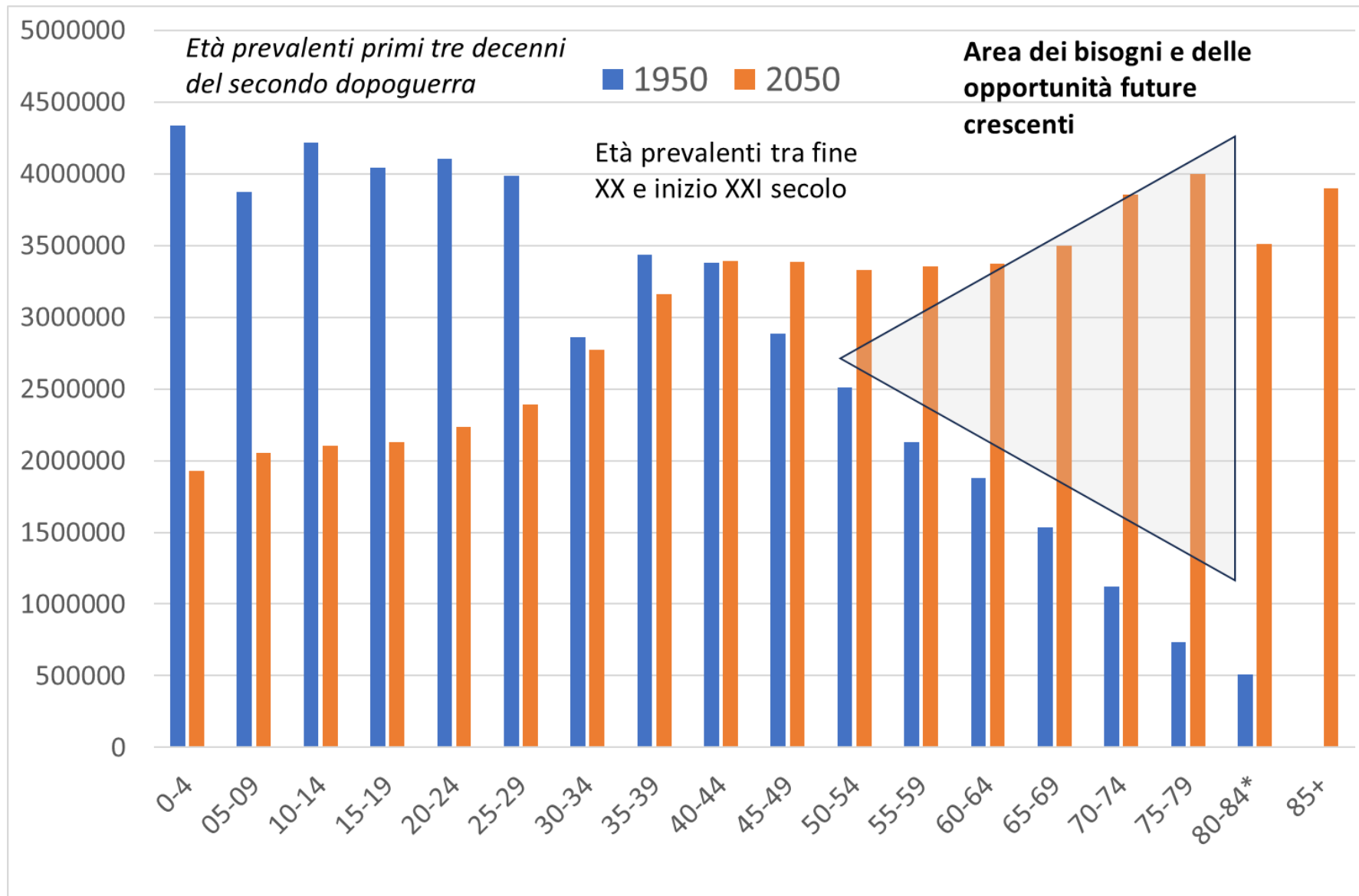


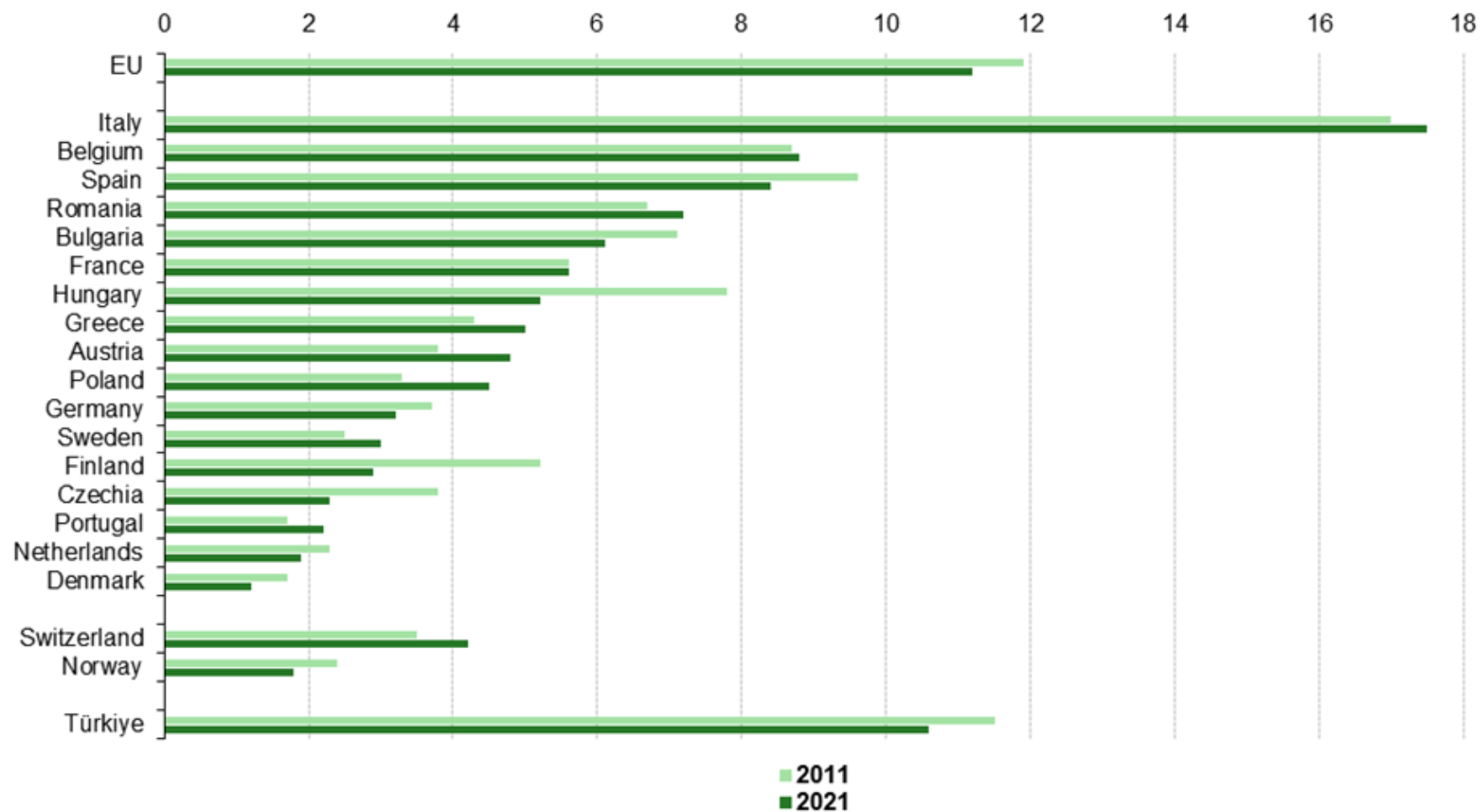
Figure 9: Ranking the top 25 economies by total GDP in 2017 and the reference scenario in 2030, 2050, and 2100



Nel 1950 l'italiano «tipo» era un under 30, nel 2050 sarà un over 70
 (condizione del tutto inedita che rischia di esporre a fragilità).

Regional disparities in employment rates, 2011 and 2021

(coefficient of variation in %, people aged 20–64, by NUTS 2 regions)



Note: as measured by population-weighted coefficient of variation for EU Member States with more than four NUTS 2 regions (Estonia, Ireland, Croatia, Cyprus, Latvia, Lithuania, Luxembourg, Malta, Slovenia and Slovakia: not applicable). Türkiye: 2020 instead of 2021. Spain and France are still in the process of implementing the Integrated European Social Statistics Framework Regulation for the labour force domain which may impact geographical comparability.

Source: Eurostat (online data code: lfst_r_lmdr)