

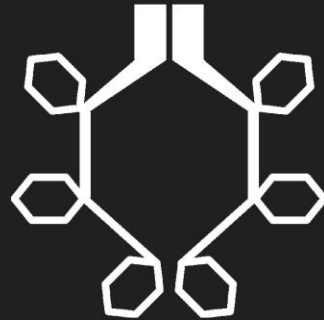


ARBOREA

Julian Melchiorri

Milano, 16 novembre 2018





ARBOREA



E300

102

E143

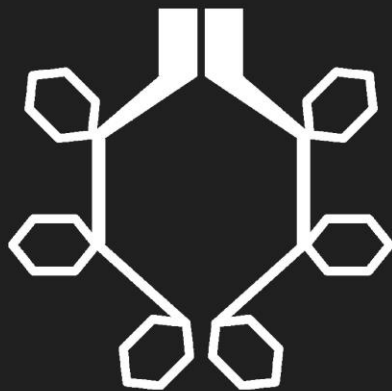
E133

E124

E132

E111



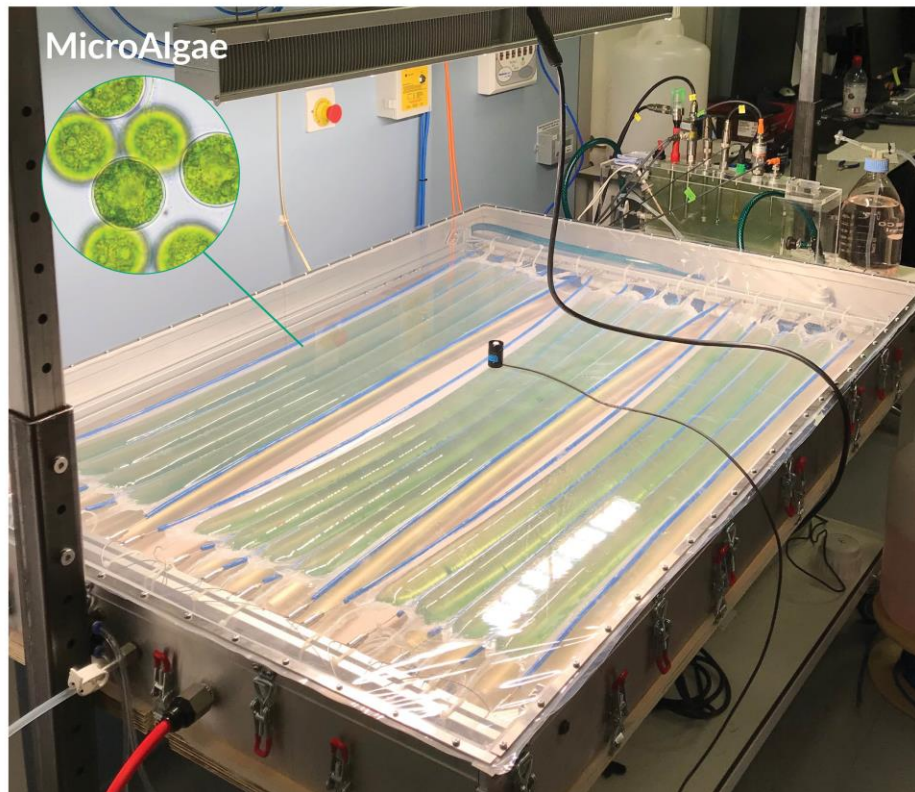


ARBOREA

ARBOREA's BioSolar Leaf™

Cultivation Technology

Sustainable
Feedstock



Healthy Food
Ingredients



ARBOREA's PRODUCTS



Phycocyanin

Blue Pigment
& Antioxidant



Spirulina

Superfood
70% proteins



Astaxanthin

Nature's Most Powerful
Antioxidant





FAST EXPANDING MARKET

Phycocyanin



12% CAGR

Spirulina



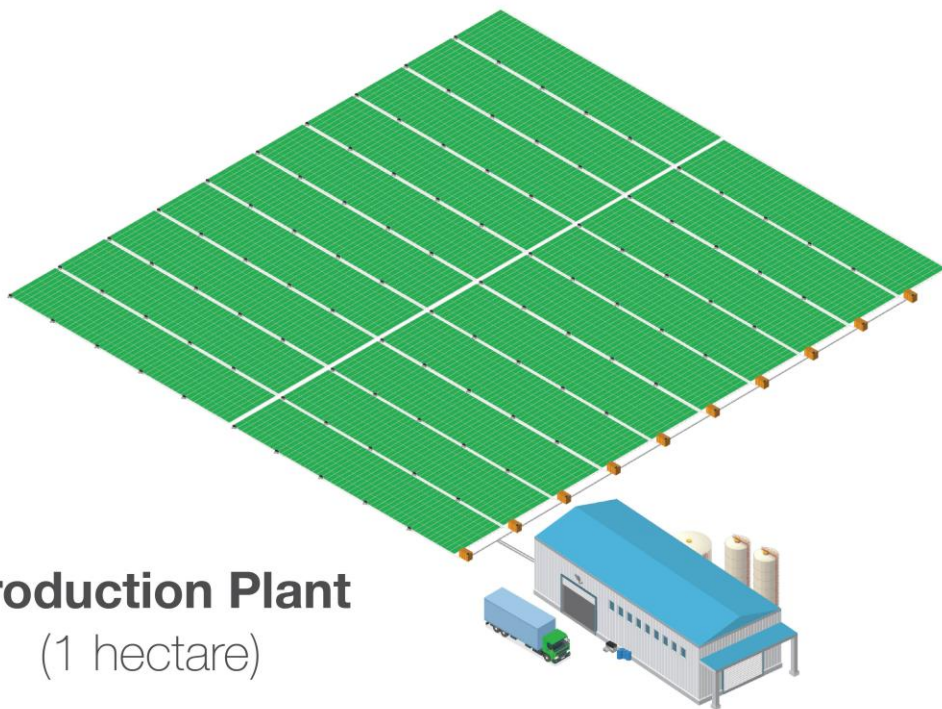
10% CAGR

Astaxanthin



10% CAGR

ARBOREA's TECHNOLOGY PLATFORM



Production Plant
(1 hectare)

- **Protein isolates**
- **Nutraceuticals**
- **Oils & Lipids**
- **Pigments**
- **Prebiotics**

- ✓ **Unlimited Scalability**
- ✓ **High Quality & Purity**
- ✓ **Very Low Costs**



Technology verified with the support of:

Innovate UK
Technology Strategy Board

European Investment Bank • Institute

Imperial College London

SYNBICITE

FOOD INGREDIENTS SUPPLIER



External
Extractors



Cultivation & Processing

SALE of
Food Ingredients



Food & Beverage
Producers





COMPETITION



JP/USA

Phycocyanin Market Leader



CHINA

Asian Largest Ponds



Parry Nutraceuticals

INDIA

Multiple Algae Products



Raceway Ponds



USA

First Raceway Ponds Producer



CHINA

Astaxanthin Market Leader



Tubular PBR

Costs

Low

Fermentation (mostly GMO)

Arborea

BioSolar Leaf

Yield

tonne/ha

0

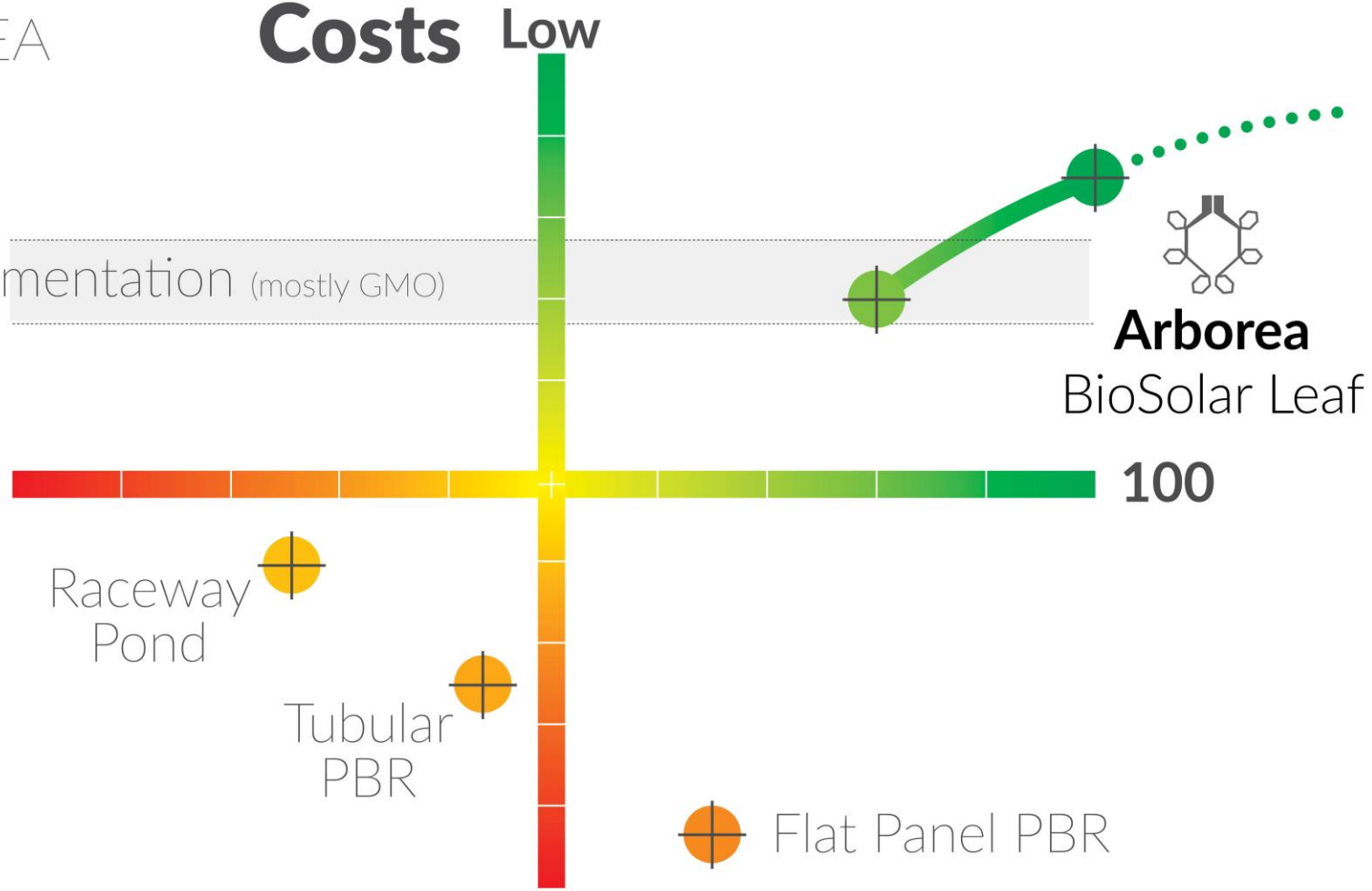
100

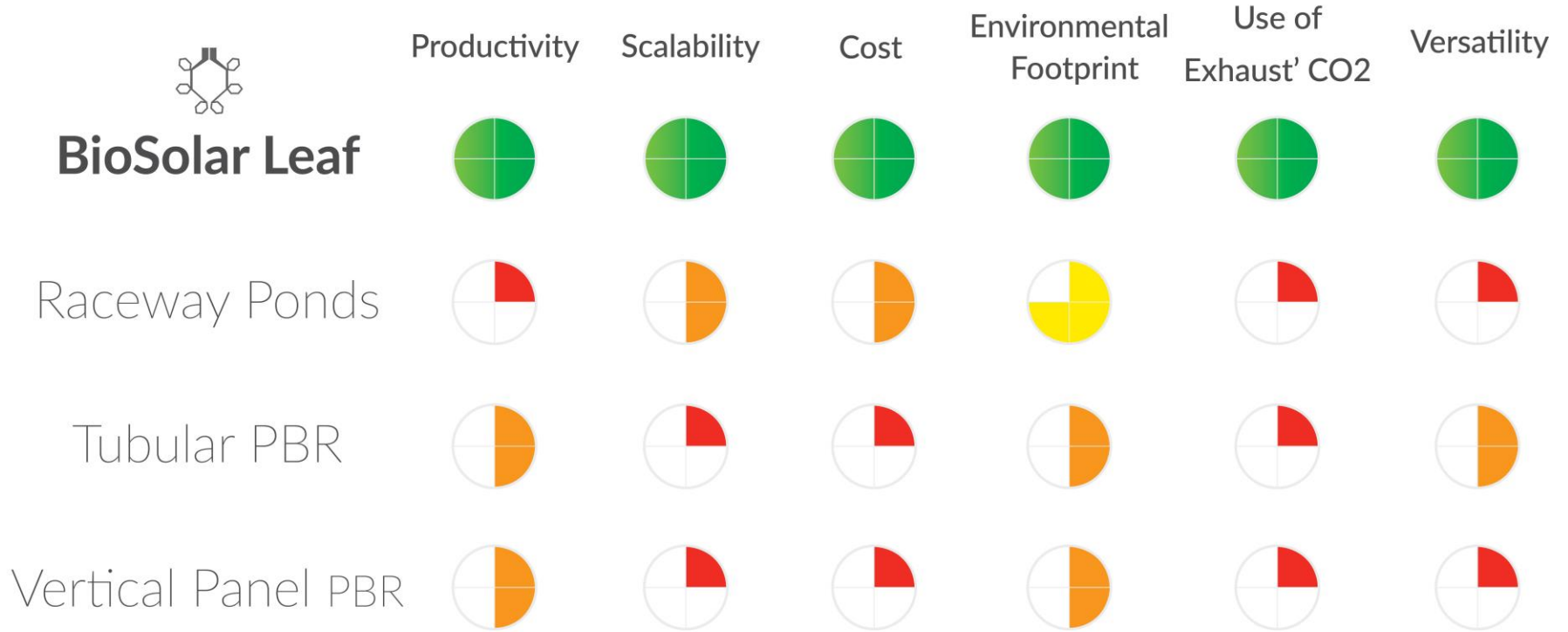
Raceway
Pond

Tubular
PBR

Flat Panel PBR

High

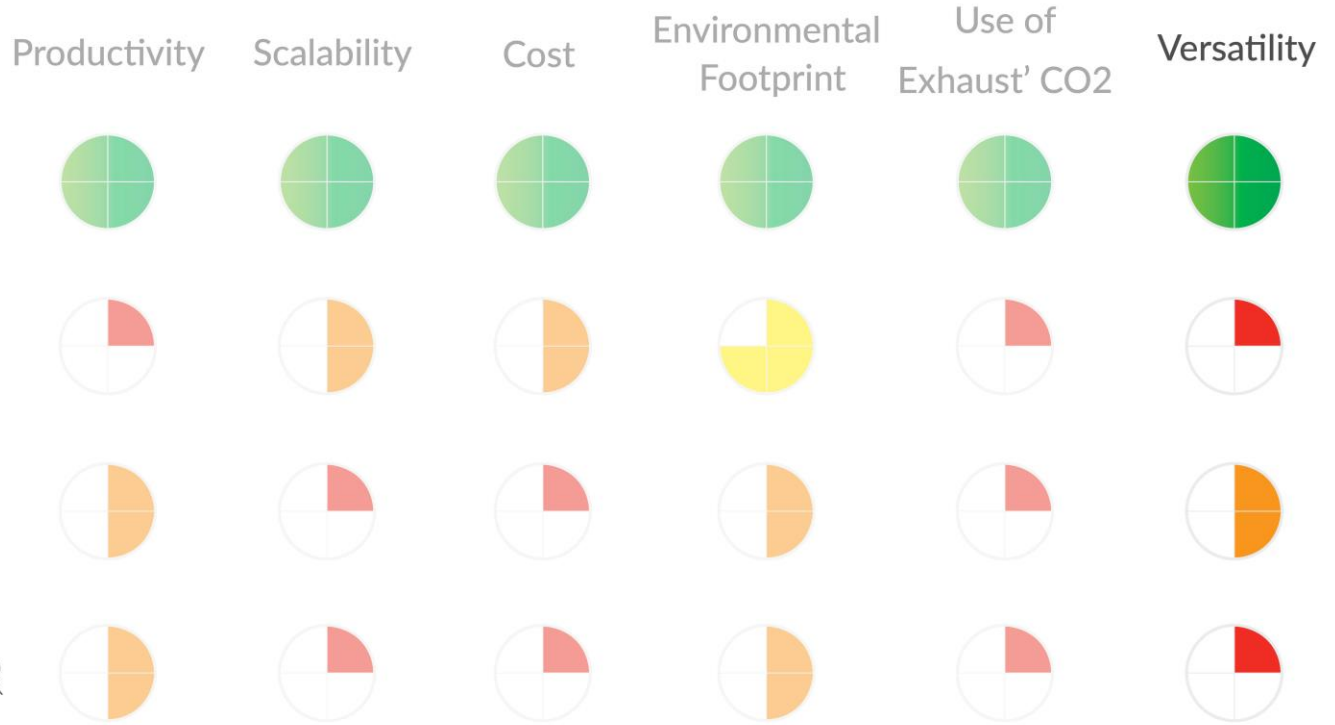








BioSolar Leaf









2 Acre:





CO₂
300
tonnes



CO₂

300

tonnes



46,000

trees



CO₂

**300
tonnes**



**46,000
trees**



**Removal
PM, VOC, NOx**



CO₂

**300
tonnes**



**46,000
trees**



**Removal
PM, VOC, NOx**

£££

**10-50%
savings**



JULIAN MELCHIORRI
CEO, Founder
(Original Inventor)



DAVID BRINKMANN
SVP of Engineering
(Ex-TerraVia VP Engineering, CP Kelco)



CESAR FLORES
Head of Biotechnology
(Ex-Valicor CTO, Heliae, Synthetic Genomics)



GRAHAM ELLIS
Advisory Board Member
(Ex-TerraVia SVP BD)



Dr MOUMITA GANGULY
Research Biotechnologist
(Post Doc University Calcutta)



YANN GLAUSER
Senior Mechanical Eng
(3form Design)

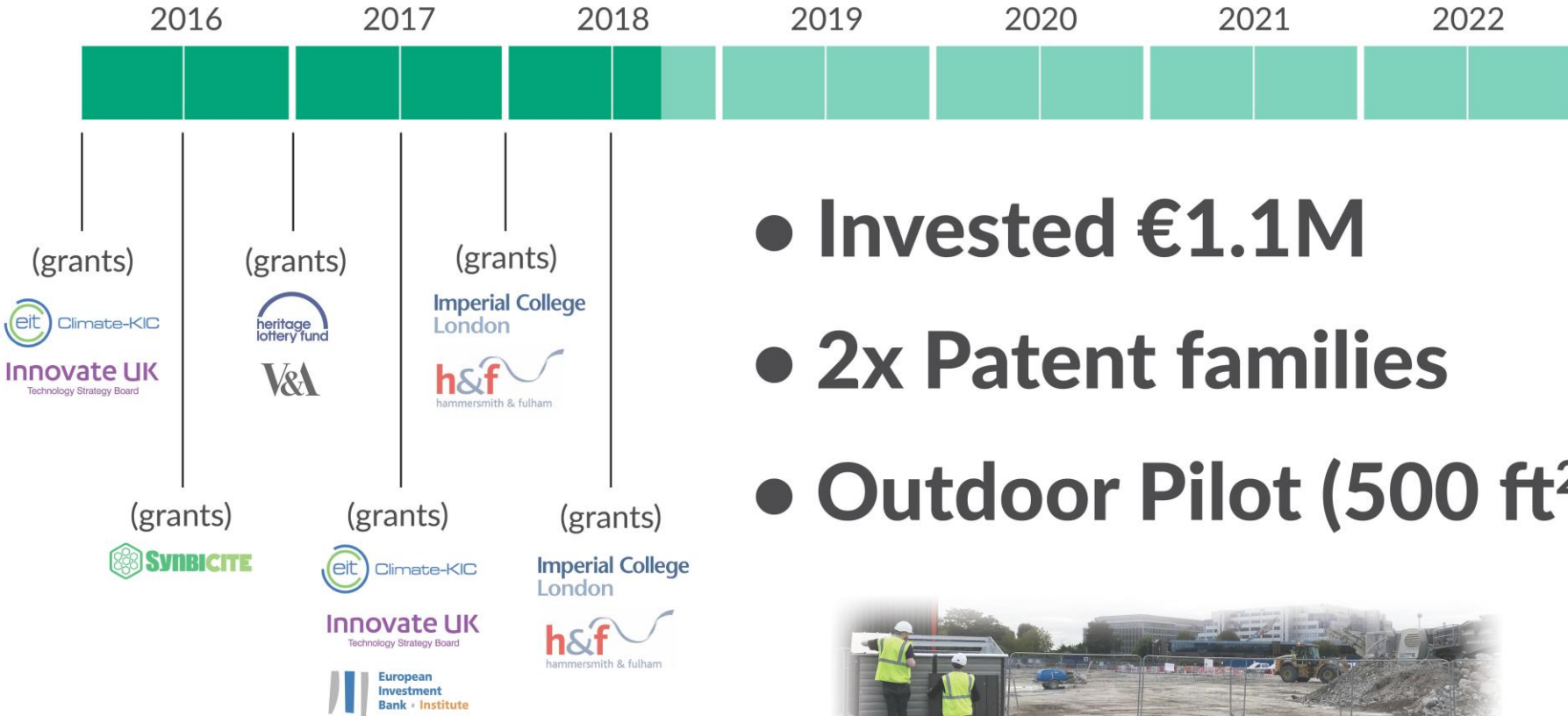


GEORGE DAVIES
Senior Electronic Eng
(Pecolec, Random Int)



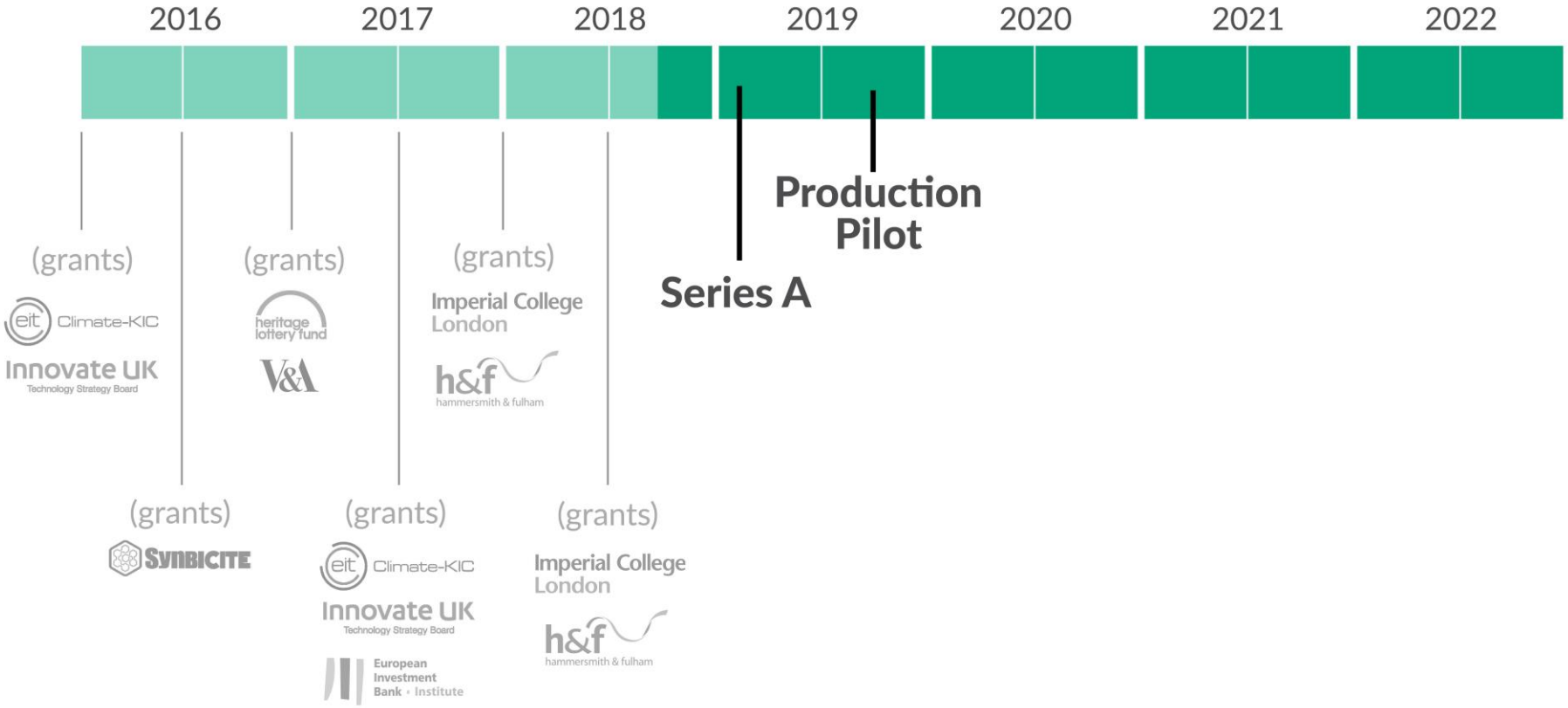
Dr JOHN JOHNSTONE
Advisory Board Member
(Ex-TerraVia SVP Operations)

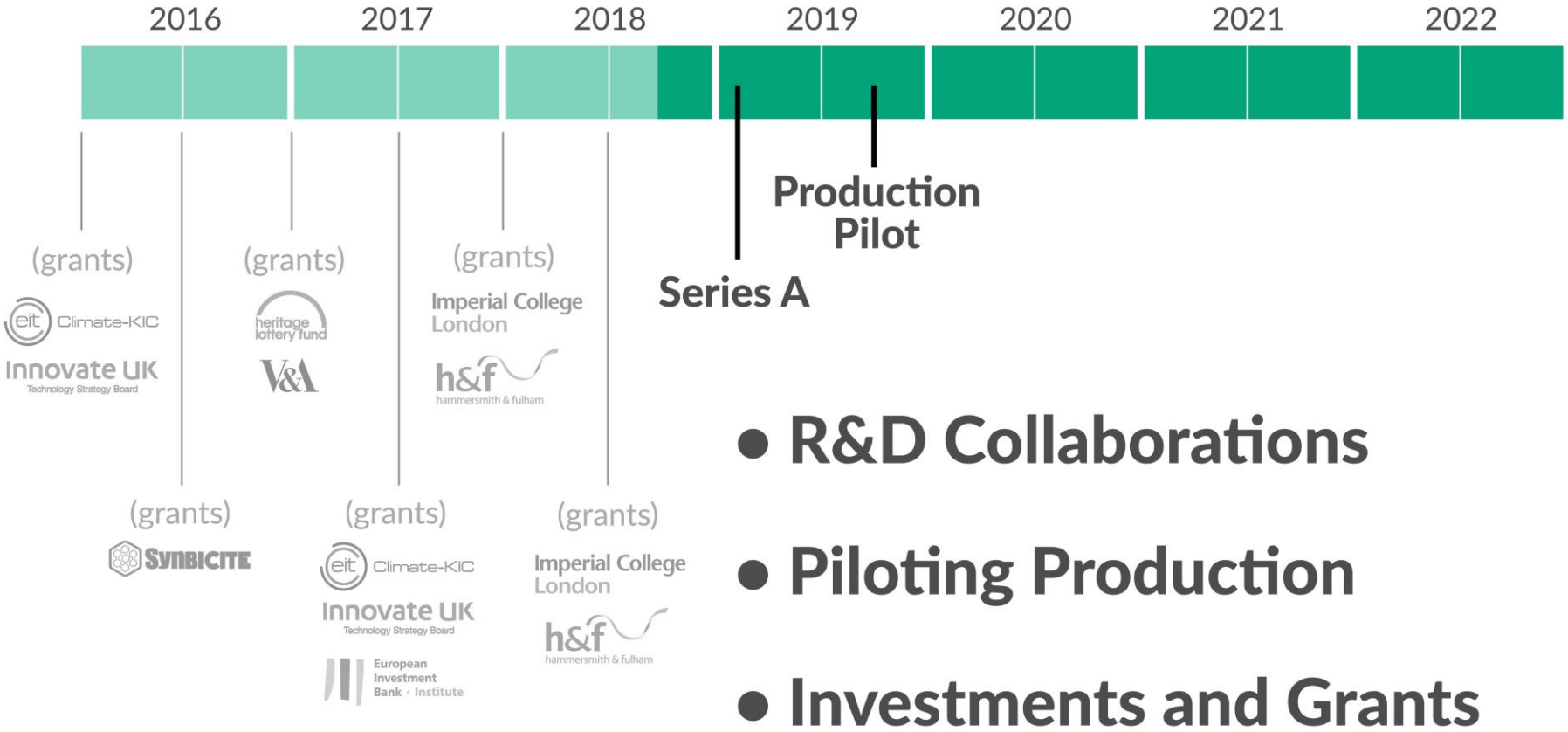




- Invested €1.1M
- 2x Patent families
- Outdoor Pilot (500 ft²)







- R&D Collaborations
- Piloting Production
- Investments and Grants



ARBOREA

UK HQ

Translation Innovation HUB
80 Wood Lane, W12 0BZ
London

Julian@Arborea.io
www.arborea.io

USA HQ

(opening Q1 2019)
San Diego, Escondido